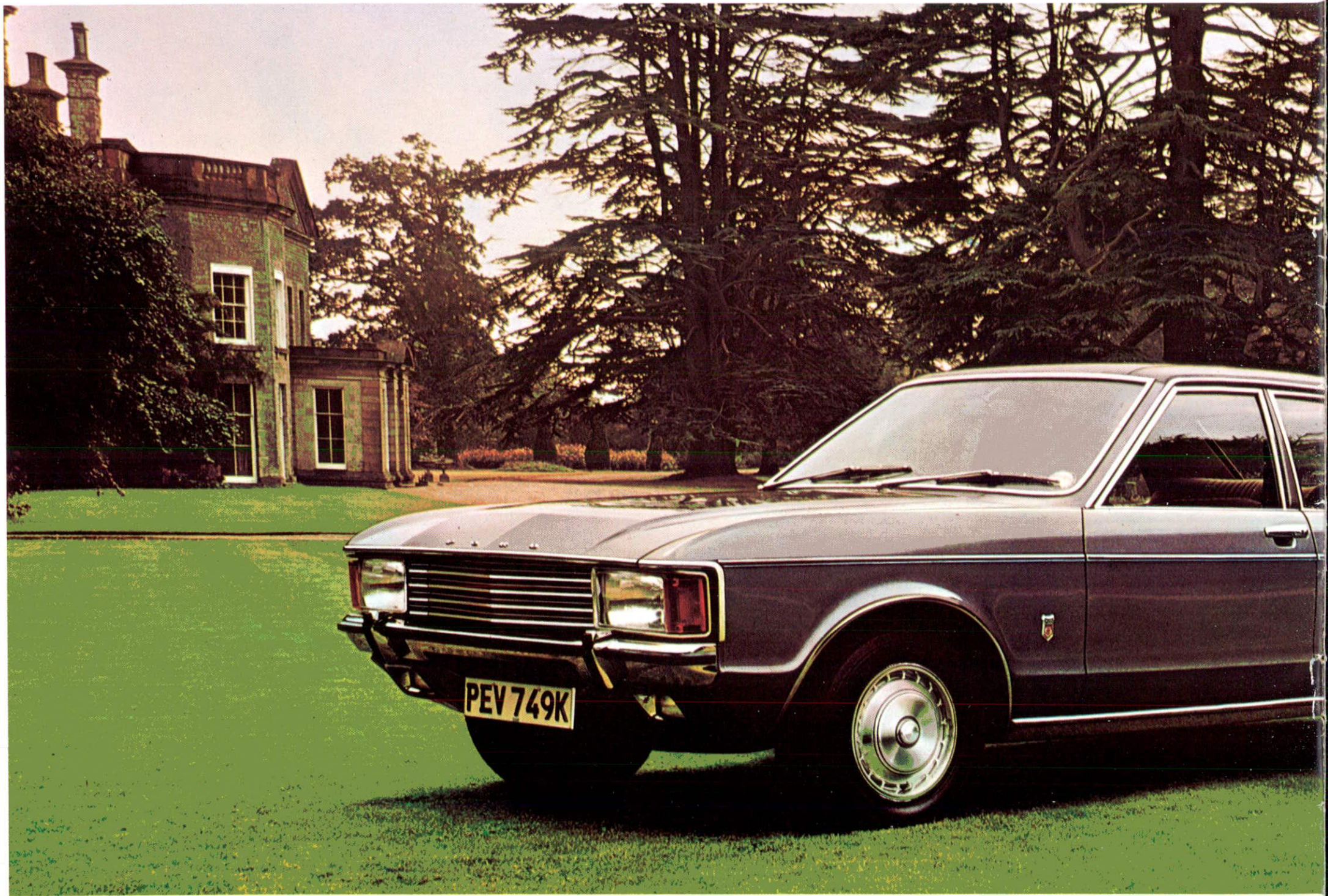


H. E. NUNN & CO. LIMITED
37 Surrey Street
NORWICH Tel : 29011

Ford Granada.







The new Ford Granada: built to take on the best in Europe.

They certainly know how to build performance saloons on the continent.

And any British car that challenges them has got to meet them on their own terms. Nobody's going to buy British just because there's a Union Jack on the bonnet.

This philosophy has produced the Granada, a totally new car, built by Ford to match its European competition in terms of looks, engineering and performance.

Granada GXL Instrumentation.

The Granada GXL's instrument panel is a sophisticated combination of driving aids and safety devices.

A clock, a tachometer, an ammeter, a trip mileage recorder and an oil pressure gauge are among the standard features of the comprehensive instrumentation.

Other driving aids include a dual tone wind horn, two speed wipers, a variable day and night rear view mirror, adjustable slide mounted fully reclining seats and face level ventilation.

But every detail of the instrumentation has been designed within the Granada's overall safety specification.

The steering column is collapsible.

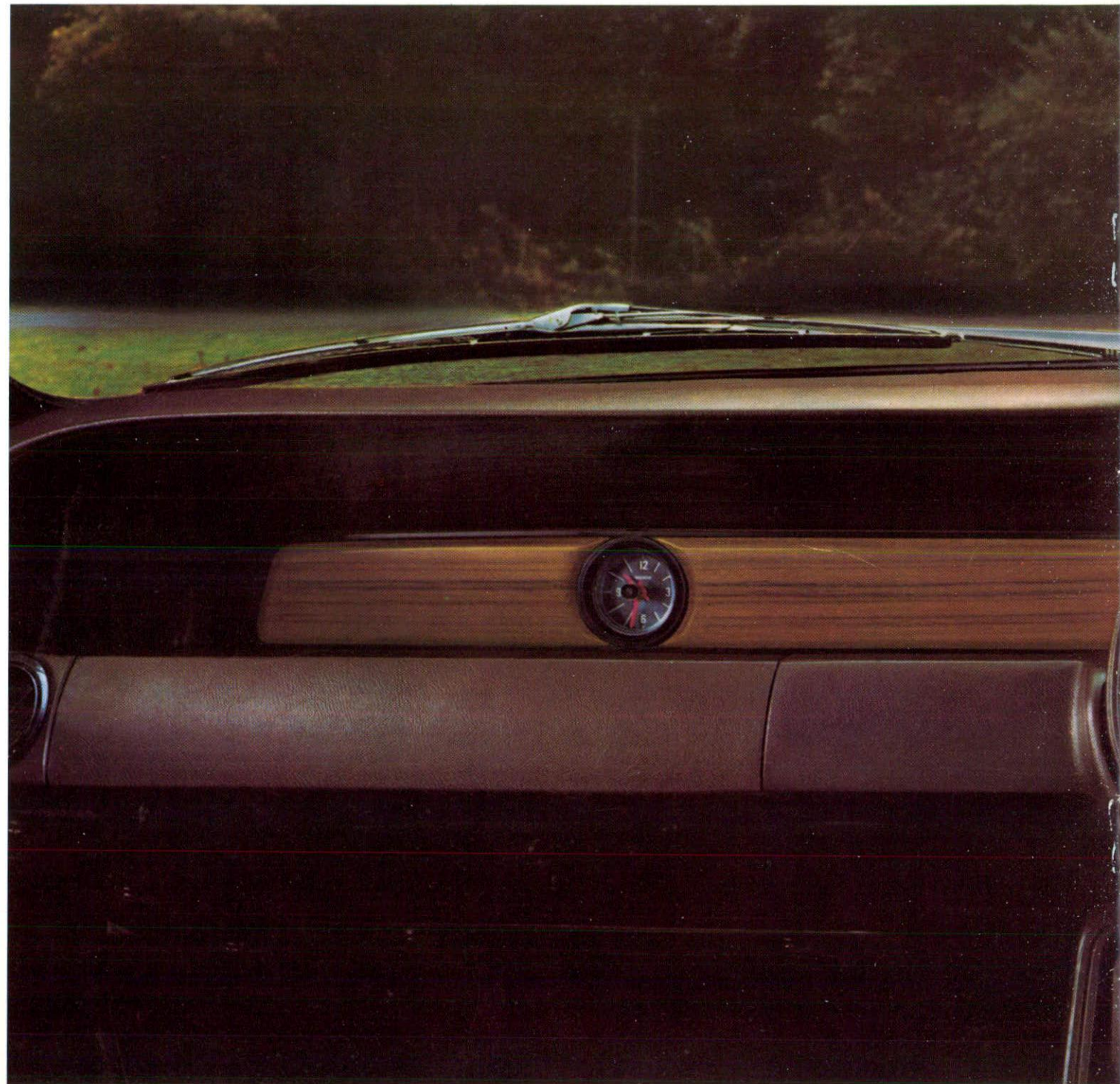
Crash padding surrounds the full width of the fascia.

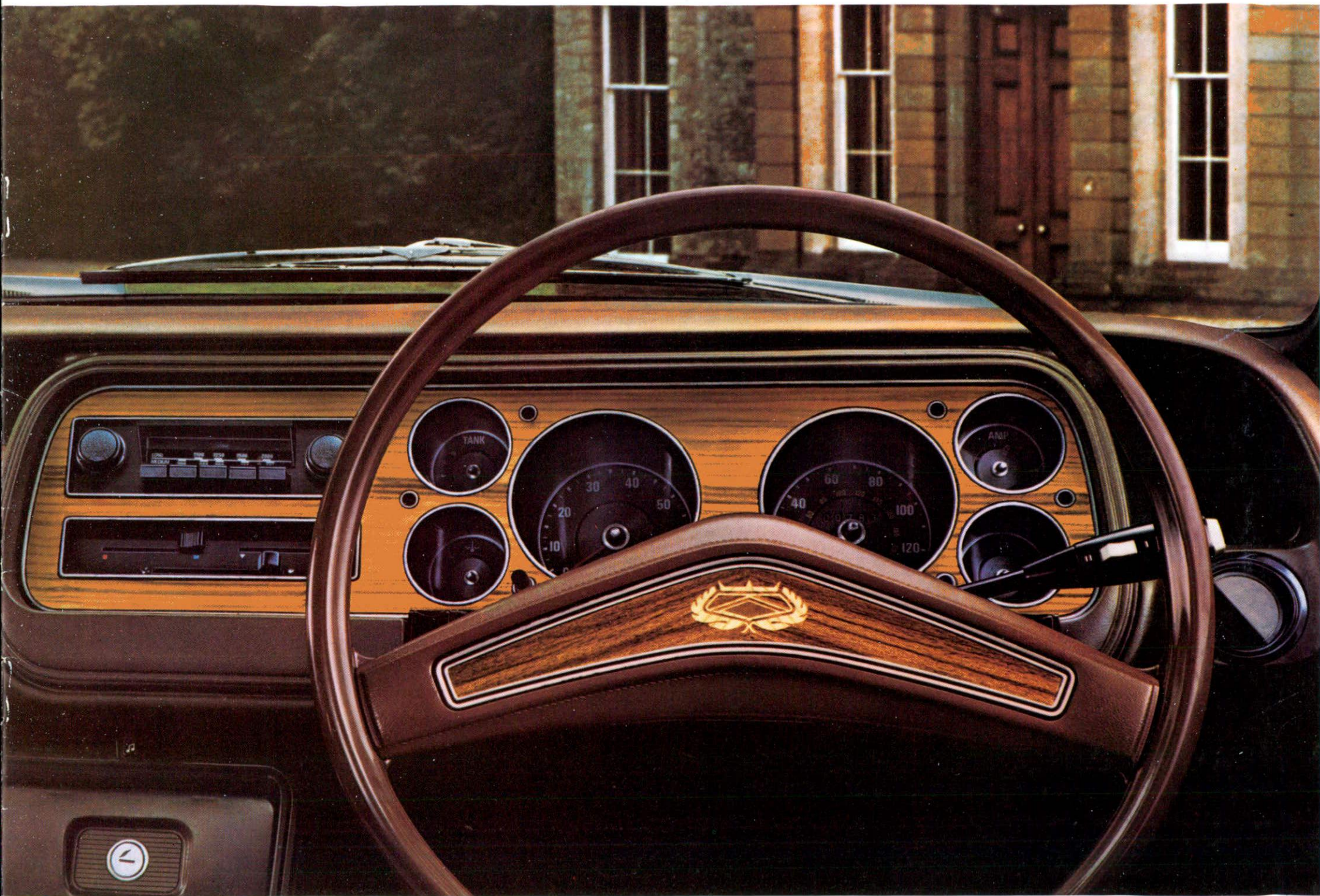
Corners and edges have been rounded off.

The switches are recessed.

And there are warning lights in the event of a systems failure.

The full Granada safety story is on pages 18 and 19.









Granada GXL luxury.

The Granada's 'open-space' design concept was created to provide a lavish amount of leg room, head room and elbow room. All of which is utilised to pamper the passenger.

The seating has been ergonomically fashioned to the highest European standards of comfort. Even the longest drive will leave you relaxed and free from the aches and stiffness you'd expect from lesser cars.

The front seats are slide mounted and fully reclining. The rear seats are individually shaped, with a foldaway armrest.

There are grab handles at the front and back, and colour keyed cut pile carpeting throughout.

The front and rear passenger sections are heated separately by ducted air.

In short, the Granada offers everything you'd expect in a car of this quality.

Granada GXL Standard features.

There are two Granada models, the Granada and the Granada GXL.

With high performance engines, a well appointed interior and a lavish amount of room for passengers and luggage, both cars can truly be described as luxury saloons.

But the GXL has the extra touches that put a car into the super-luxury class.

Touches such as high quality radio with dual speakers fitted as standard.

Touches such as a vinyl roof, all-round tinted glass and a sliding sun-roof with a unique 'tilt open' device that keeps fresh air flowing through the car, and keeps you dry, when it's raining.

Touches such as fully automatic transmission and power steering.

Of course, not all these extras may appeal to you.

Which is where Ford's policy of giving you the car you want pays off.

You can choose the Granada, and add most of the GXL features as options.

The full options story is on pages 12 and 13.





The Granada.

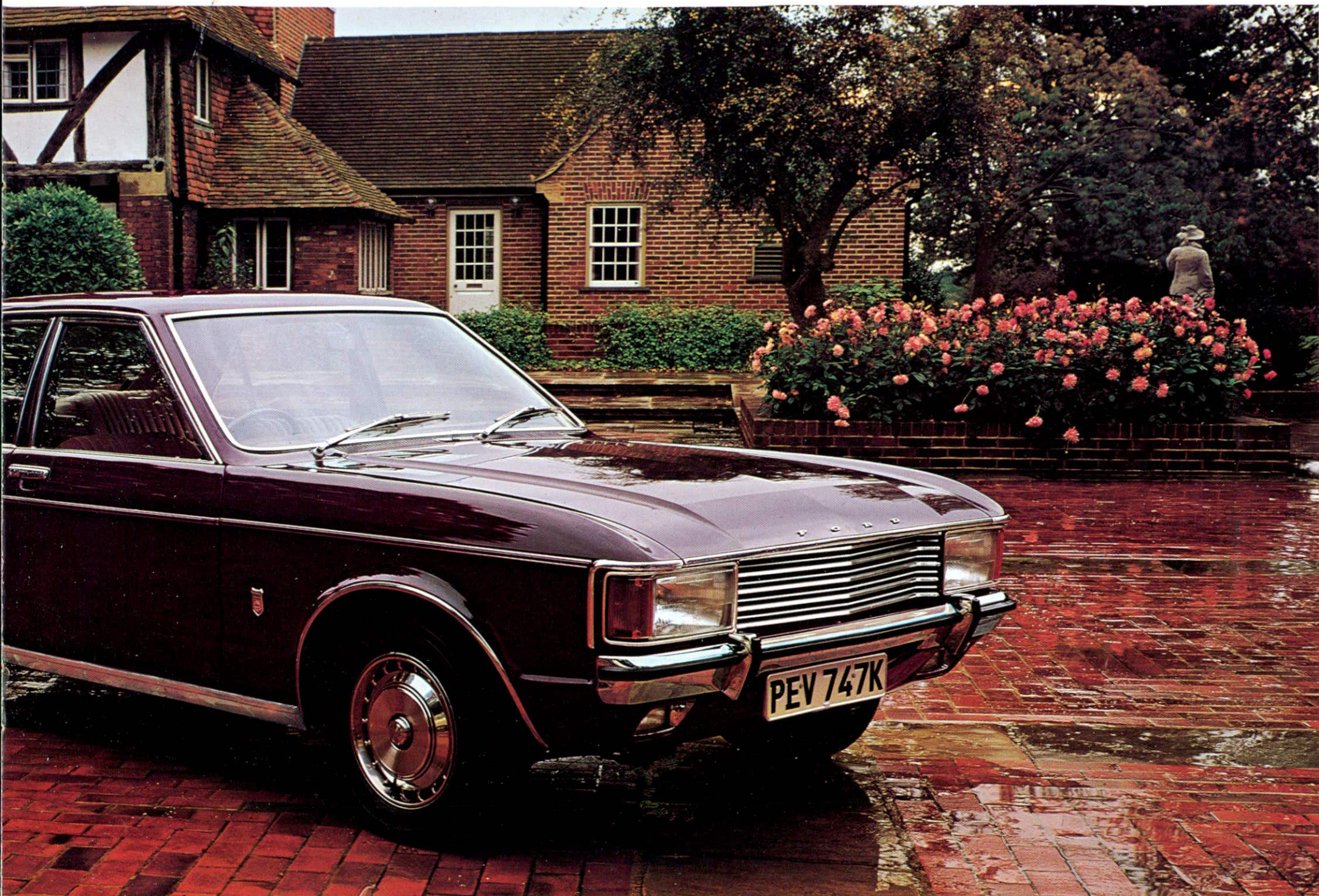
On the road, the Granada will do just about anything you ask of it - and safely.

Two engines are available - a 120 horsepower 2.5 litre V6, with a maximum speed of 106 mph and an acceleration rate of 0-60 in 10.8 seconds - and a 138 horsepower V6 3 litre that can produce 113 mph and hits 60 in 9 seconds flat.*

With fully independent suspension, a servo assisted dual braking system, wide track, long wheelbase and low centre of gravity, the Granada has clearly been built for safe, uninhibited, high speed motoring.

*FORD COMPUTED TEST FIGURES (WITH MANUAL TRANSMISSION.)





OVERRIDERS ARE ACCESSORIES AVAILABLE AT EXTRA COST.

Granada Standard features.

The Granada is an extremely handsome car.

Every styling line has been functionally designed to minimise overall dimensions while providing a spaciouly proportioned interior.

And there's certainly nothing basic about the interior.

The clock, tachometer, ammeter, oil pressure guage and trip mileage recorder are all there.

So are the cigar lighter, the two speed wipers, the fully reclining seats, the face level ventilation, the colour keyed cut pile carpeting and the individual rear seats.

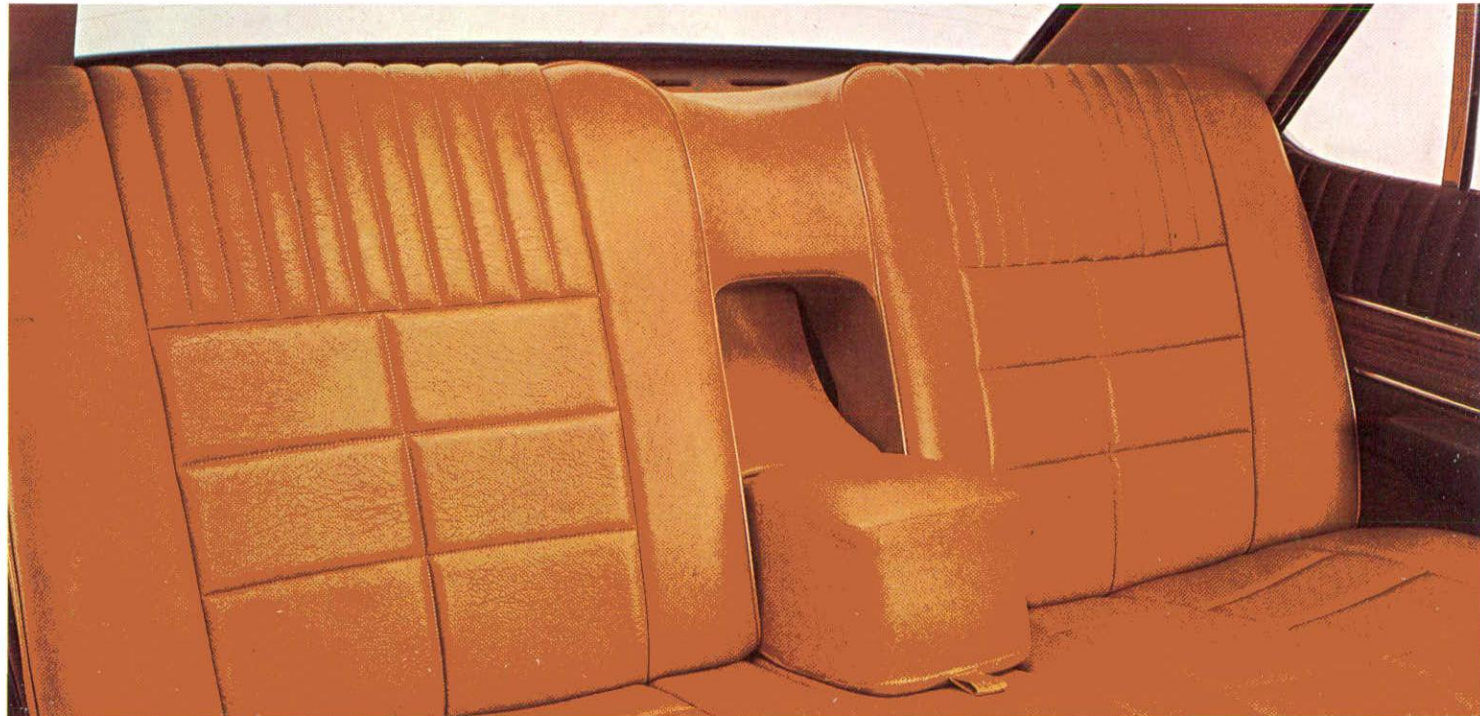
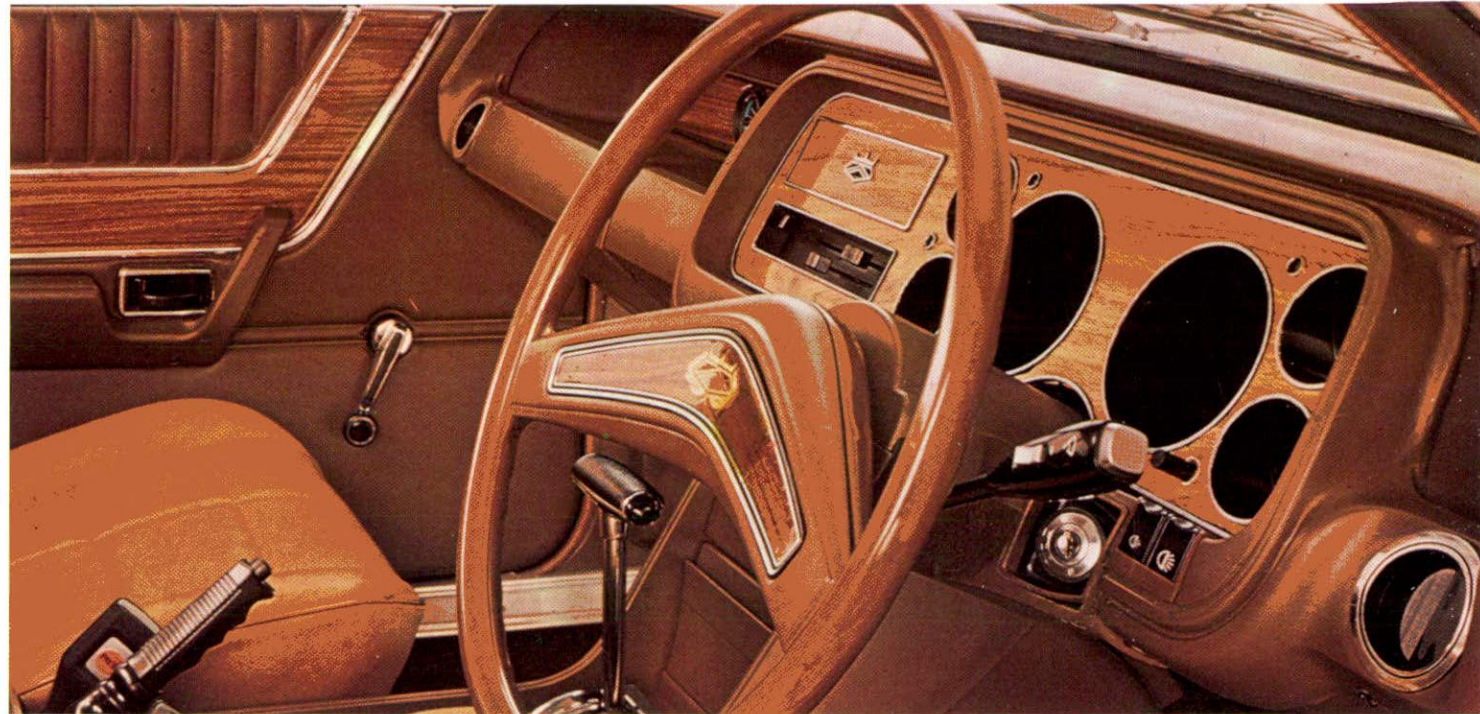
But, whether you buy the Granada or the Granada GXL, there's a uniquely wide range of options available to help you make yours a highly personalised car.

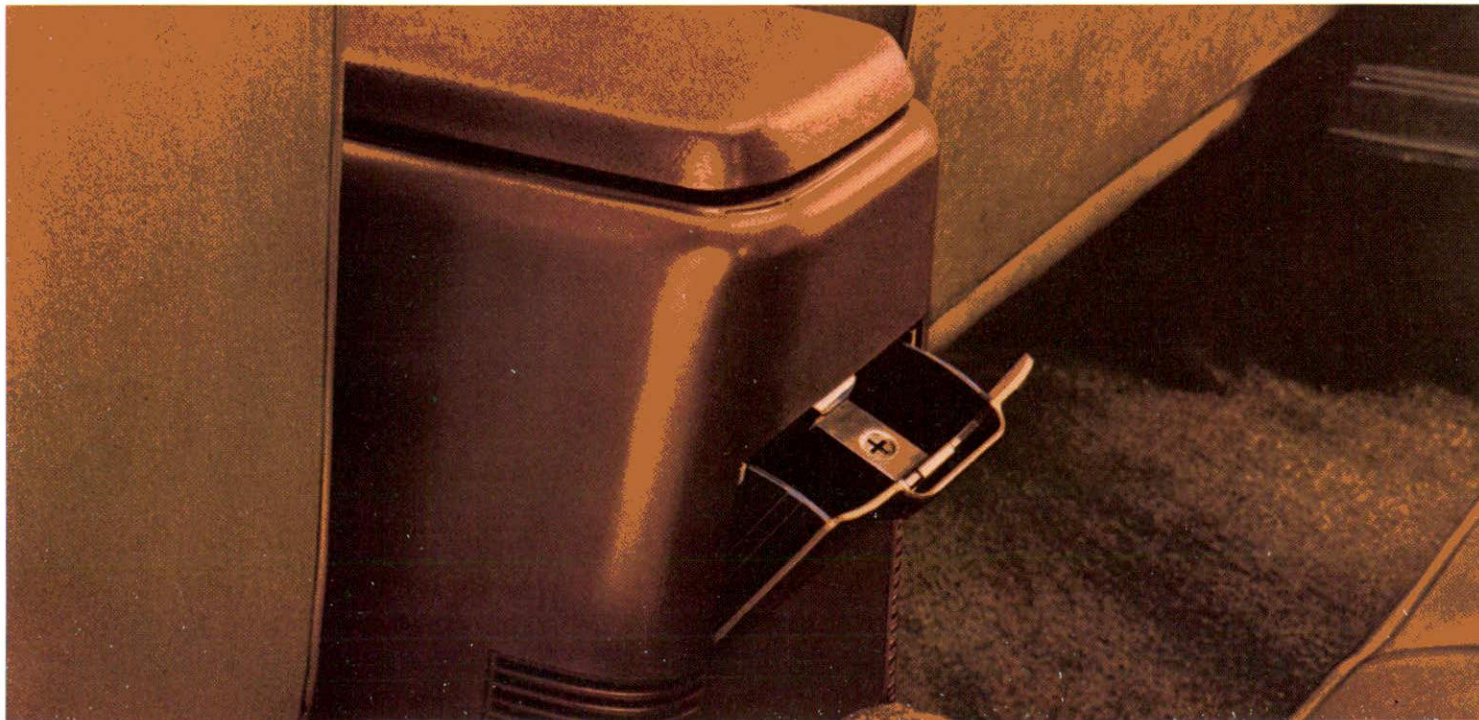
Metallic paint, for example, is a very popular option.

Sports road wheels and radial ply tyres add a distinctive flair.

A laminated windscreen is available.

And, as explained earlier, GXL features such as a vinyl roof, automatic transmission, power steering, tinted glass all round and a sliding roof can be fitted as options to the Granada.





Granada Engineering.

If the Granada was to be the equal of Europe's best performance saloons, it had to be engineered to standards as exacting as any in the motor industry.

And it was.

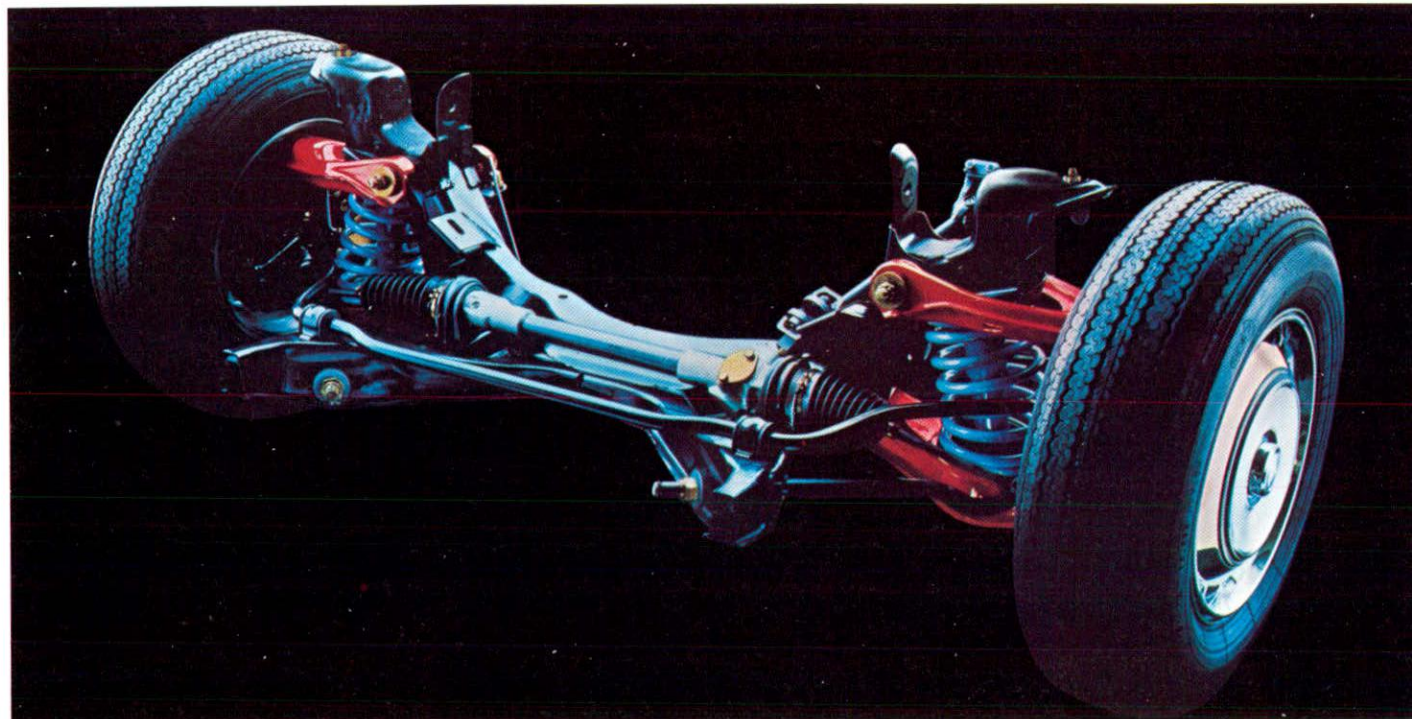
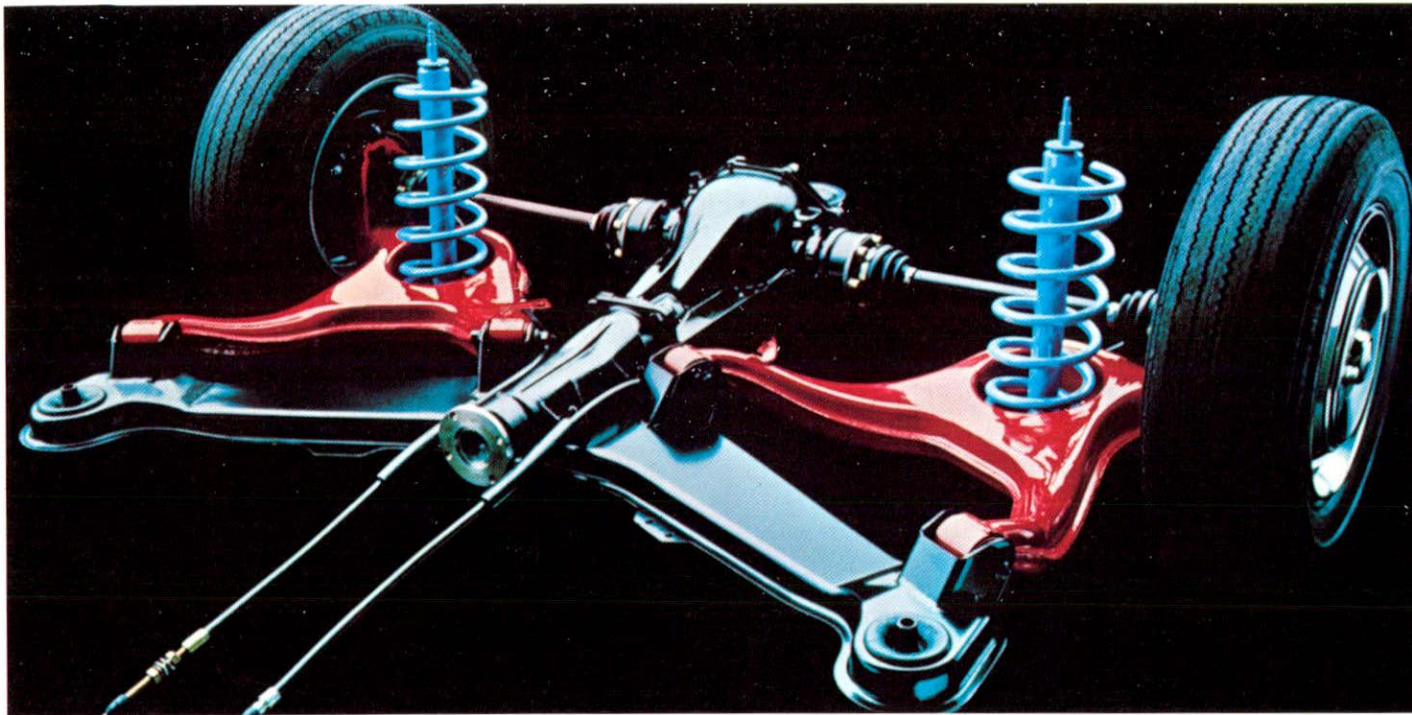
The body, for example, built to an all new sheet metal system, has been designed to be relevant not only to luxury motoring today but also to meet all anticipated developments and legal requirements for years to come.

A fully independent suspension system was chosen for the Granada to provide optimum handling and smooth riding characteristics, combined with full control under acceleration or braking.

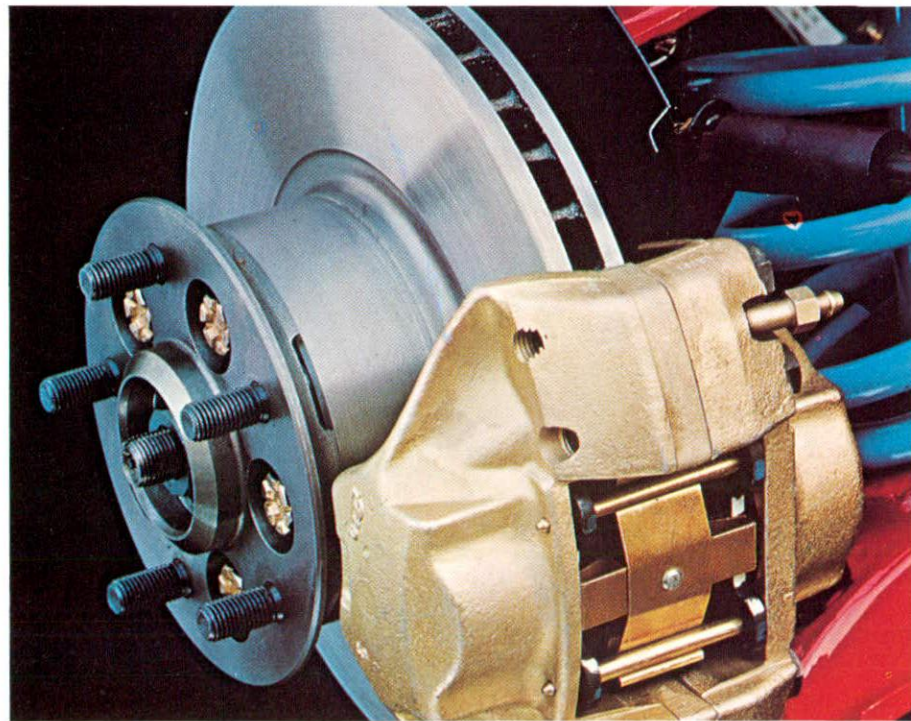
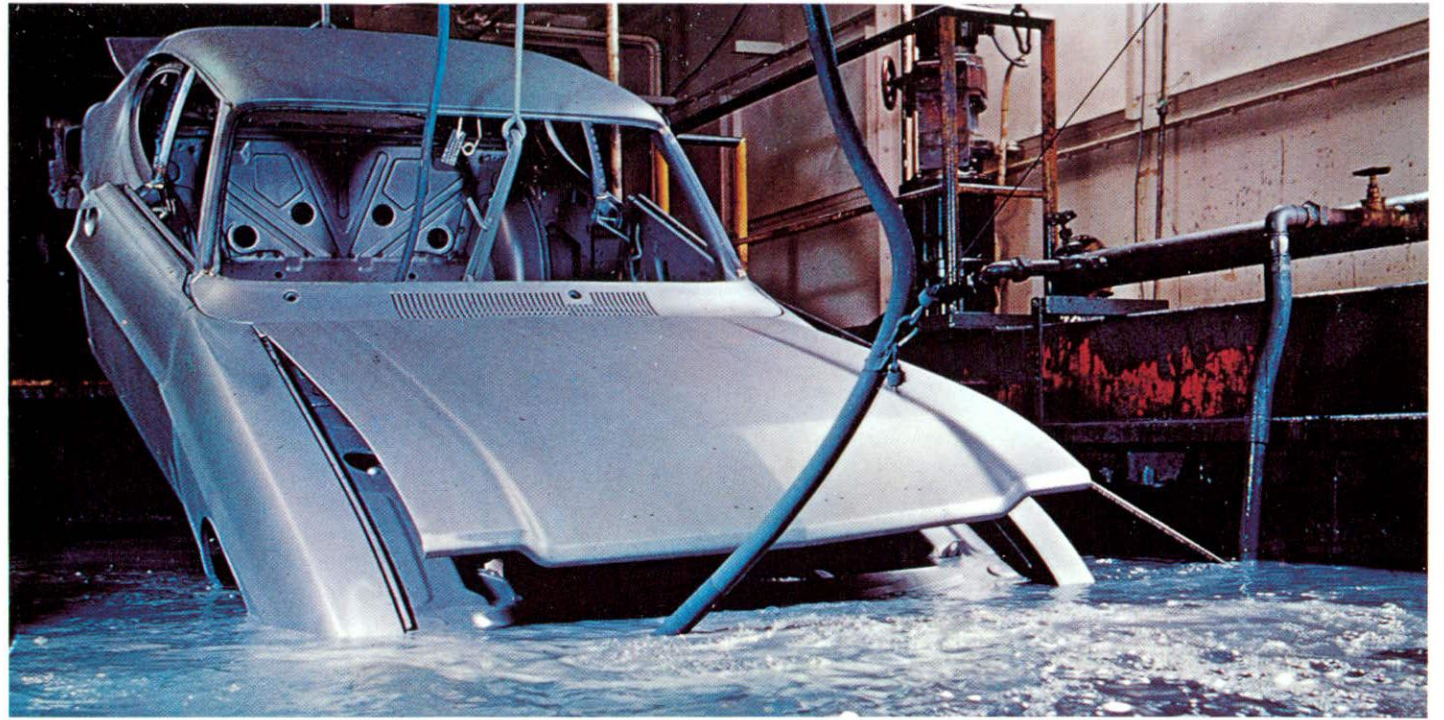
The rear suspension is of the semi-trailing arm/coil spring type. The whole unit is mounted on bonded rubber insulators to the body. Which helps to reduce the levels of noise, vibration and harshness (NVH).

At the front, a Short and Long Arm suspension system has been employed. Among its built-in advantages are permanently lubricated ball-joints (which eliminate the need for routine servicing) and a sub-frame mounted anti-roll bar (which improves handling).

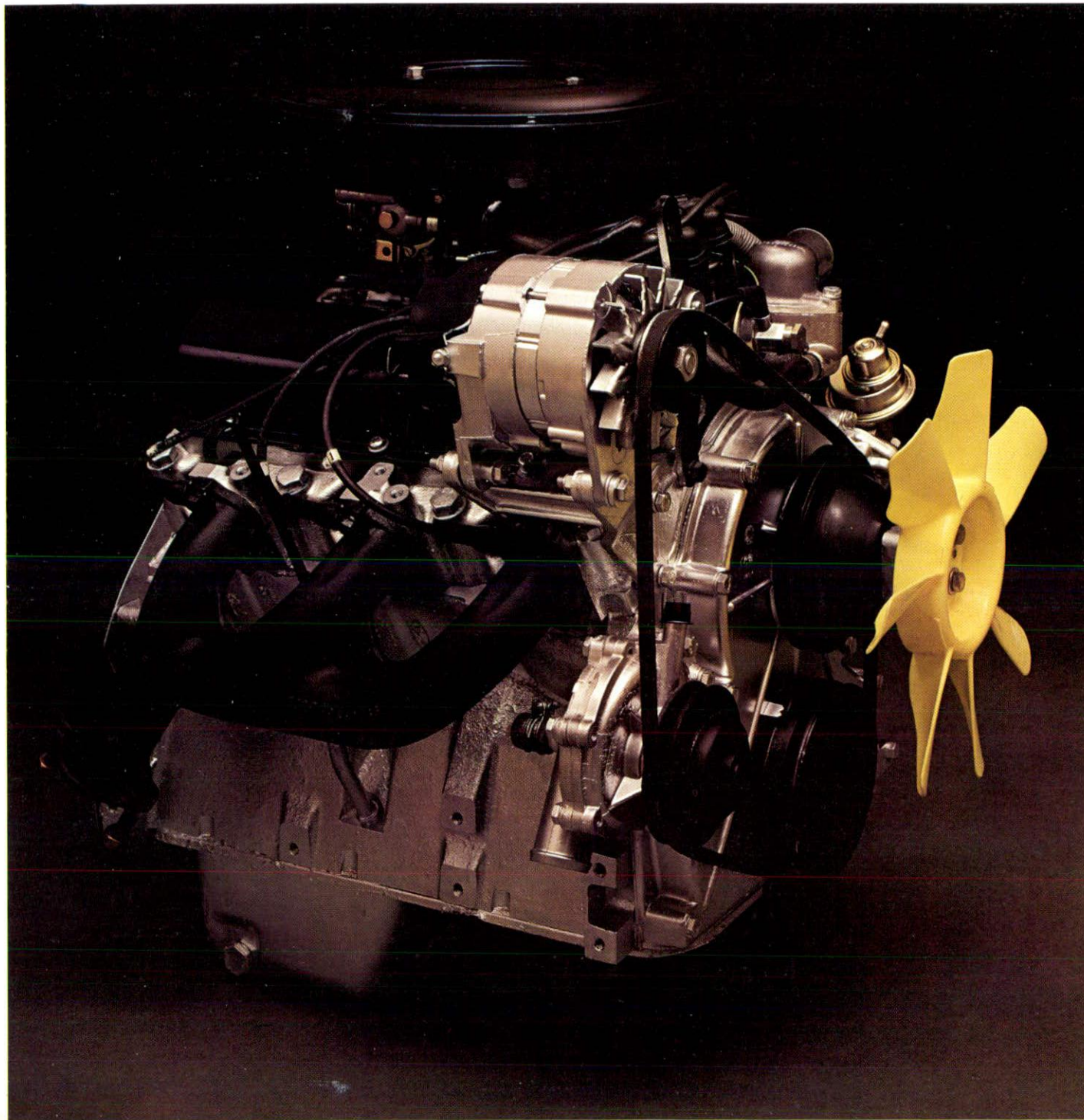
The Granada also incorporates a rack and pinion steering system, a highly sophisticated electrical system, which makes wide use of printed circuits and multiple wiring connections, and an under-floor fuel tank with all connections outside the breathable car atmosphere (in line with the latest safety developments in the USA).



ABOVE: REAR SUSPENSION. BELOW: FRONT SUSPENSION.



ABOVE: ALL VEHICLE BODIES ARE PHOSPHATE DIPPED AND PRIMER DIPPED.
BELOW: VENTILATED DISC BRAKES (GRANADA 3 LITRE).



Granada Specifications.

Engines: Two to choose from, both with 6 cylinders arranged in 'vee' (60°) formation 2500cc OHV and 3000cc OHV engines. Crossflow cylinder heads; Bowl-in-piston combustion chambers, with cylinder block cast integrally with upper half of crankcase.

Engine Lubrication: Internally mounted rotor type oil pump in oil pan; capacity of sump 8.8 imp. pints with filter, 7.5 imp. pints without filter. Filter is full flow and the 'throwaway type'.

Ignition: 12 volts system with ballast resistor coil.

Fuel System: Mechanical fuel pump, Weber dual choke carburettors fitted with automatic choke. Tank capacity 14.3 gallons (65 litres).

Cooling System: Pressurised, pump assisted, thermostatically controlled. Capacity with heater 20.1 pints.

Transmission: Cable operated, single plate diaphragm spring type clutch (9½ ins (24.1 cms)). Single dry plate 4-speed all synchromesh gearbox with remote floor gear shift. Split drive shaft.

Ratios: (:1)	Engine	1st	2nd	3rd	4th	Reverse
	2500cc	3.65	1.97	1.37	1.00	3.66
	3000cc	3.16	1.95	1.41	1.00	3.35

Rear Axle: Hypoid final drive.

Ratios: 2500cc	3.64:1
3000cc	3.45:1

Front Suspension: Independent, with double wish-bone isolated by double mountings. Coil springs, lubricated for life ball joints. Sub-frame mounted anti-roll bar.

Rear Suspension: Independent, semi-trailing arm/coil spring type with two plunging constant velocity joints on each half shaft. Whole unit mounted on low rate bonded rubber insulators to the body.

Brakes: Hydraulic dual line (i.e. separate front and rear systems). Vacuum servo assisted self-adjusting front disc brakes (10.6 ins) and rear drums (9 x 2.25 ins). 3 litre has ventilated discs at front.

Steering Gear: Rack and Pinion. Padded steering wheel. Safety steering column with anti theft lock. Turning circle 33.7 feet (10.3 metres) kerb to kerb.

Wheels and Tyres: Pressed steel disc with welded asymmetrical rim 5½ ins. Tyres (2500cc) 6.95 14 Cross-ply (3000cc) 175 14 radial ply.

Electrical Equipment: Dual windtone horns, battery 55 amp hour, 35 amp alternator; pre-engaged starter motor; all circuits fully fused.

Body: All steel welded integral construction. Seating within wheelbase; zone toughened safety windscreen. Four doors, single tone paint finish. Bright metal mouldings on front and rear window surrounds, door window frames, drip rail, body side (with rubber insert), rocker panel, wheel arches, boot lid, back panel, rubber inserts on bumpers. One piece wheel covers, chrome exhaust trim, spare wheel housed inside boot. Effective luggage capacity 13.5 cu.ft. and applique on back panel.

Instruments: Speedometer with mileometer and trip-meter, tachometer, oil pressure gauge, ammeter, water temperature and fuel gauges, clock, direction indicator warning lights, ignition and handbrake warning lights, main beam, warning light for heating rear window.

Controls: Steering column antenna controlling: head-lamp flasher, main beam, lane change and direction indicators, two speed wipers, and low load parking light selector. Foot operated windscreen washer/wiper. Horn controlled from panel in steering wheel spoke. Ignition/starter switch and anti-theft lock on steering column. Heater/demister control on fascia. Non-protruding safety switches for side lights, headlamps, heated rear window and fog lamps.

General Equipment: Variable speed heater and demister with aeroflow face level ventilation, recessed instrument panel, padded fascia, two speed windscreen wipers, semi-sealed beam rectangular headlamps incorporating side lights. Fog lamps. Direction and lane change indicators. Rear light cluster incorporating reversing lights, direction indicators, reflectors. Interior bonnet release. Two courtesy lights operated by all four doors. Anti-burst door locks with child proof locks on the rear doors. Heated rear windows, dual tone wind horns, dipping rear view mirror, reclining front bucket seats, adjustable for forward and backward movement,

individual rear seats with folding centre armrest, glove box lock, glove box illumination, centre console incorporating ashtray and cigar lighter, rear compartment heater outlet and front centre armrest, fully padded sun visor incorporating vanity mirror on passenger side. Map pocket on cowl sides, front and rear grab handles, colour keyed cut-pile carpet and headlining. Simulated wood fascia, wood trimmed door panels, seat valances, rubber mat in luggage compartment, door pull armrests with integral grab handle front and rear. Two ashtrays in rear, variable intensity instrument illumination switch.

Additional Equipment for the Granada GXL

Radio with dual speakers, vinyl roof, overrides, power assisted steering, automatic transmission, tinted glass all round, manually operated sunshine roof, inertia reel seat belts, brake failure warning light, (with 3 litre engine) 175 14 radial ply tyres and ventilated front disc brakes. One rear compartment ashtray in centre console.

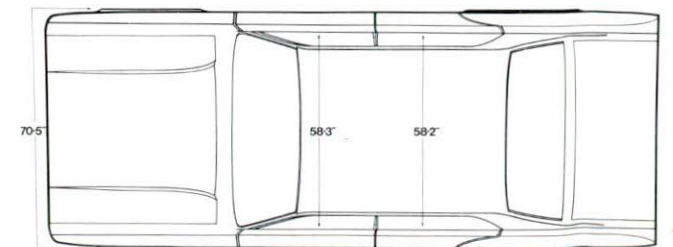
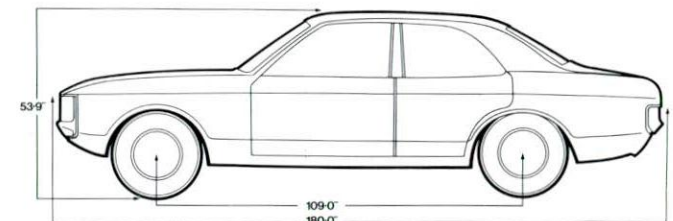
2500cc V6 OHV Engine

Top Speed:	106 mph
Touring Fuel Consumption:	24.3 mpg
0-60 mph:	10.6 secs
30-50 mph:	9.8 secs
Capacity:	2495cc
Compression Ratio:	9.1:1
Bore:	3.6875 ins (93.663 mm)
Stroke:	2.376 ins (60.35 mm)
Max. Power: BHP	(SAE): 137 at 5500 (DIN): 120 at 5300
Max. Torque:	(SAE): 145 ft lb at 3000 (DIN): 132 ft lb at 3800

3000cc V6 OHV Engine

Top Speed:	113 mph
Touring Fuel Consumption:	24.0 mpg
0-60 mph:	9.0 secs
30-50 mph:	7.1 secs
Capacity:	2994cc
Compression Ratio:	8.9:1
Bore:	3.6875 ins (93.663 mm)
Stroke:	2.851 ins (72.415 mm)
Max. Power: BHP	(SAE): 157 at 5200 (DIN): 138 at 5000
Max. Torque:	(SAE): 191 ft lb at 3000 (DIN): 174 ft lb at 3000

ALL PERFORMANCE AND ECONOMY FIGURES QUOTED ARE FORD COMPUTED FIGURES.



Granada Safety Features.

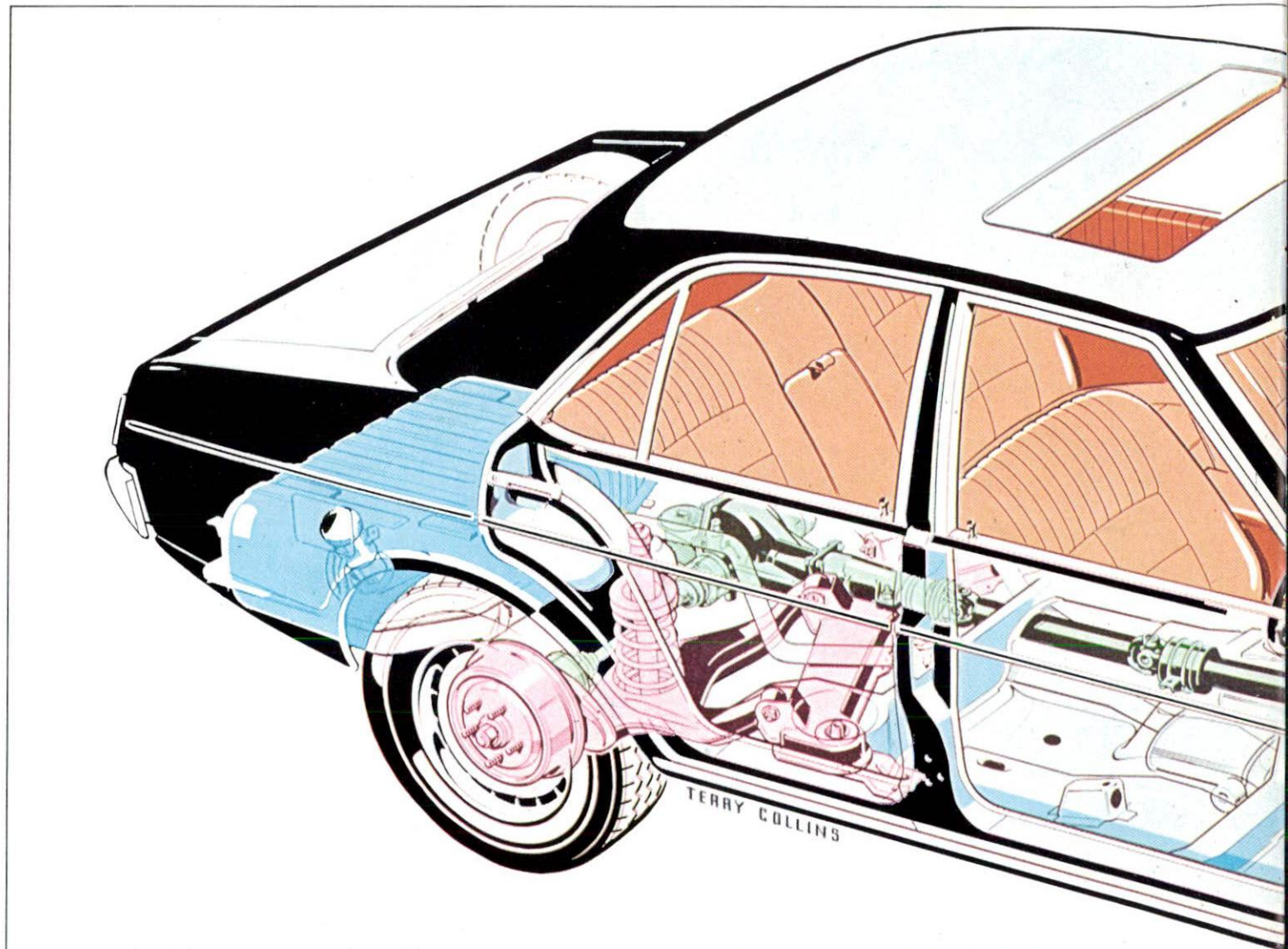
The safety features incorporated into the Granada are comprehensive and highly sophisticated.

Inside the car, shock absorbent material surrounds the fascia, switches are recessed, the steering wheel is padded.

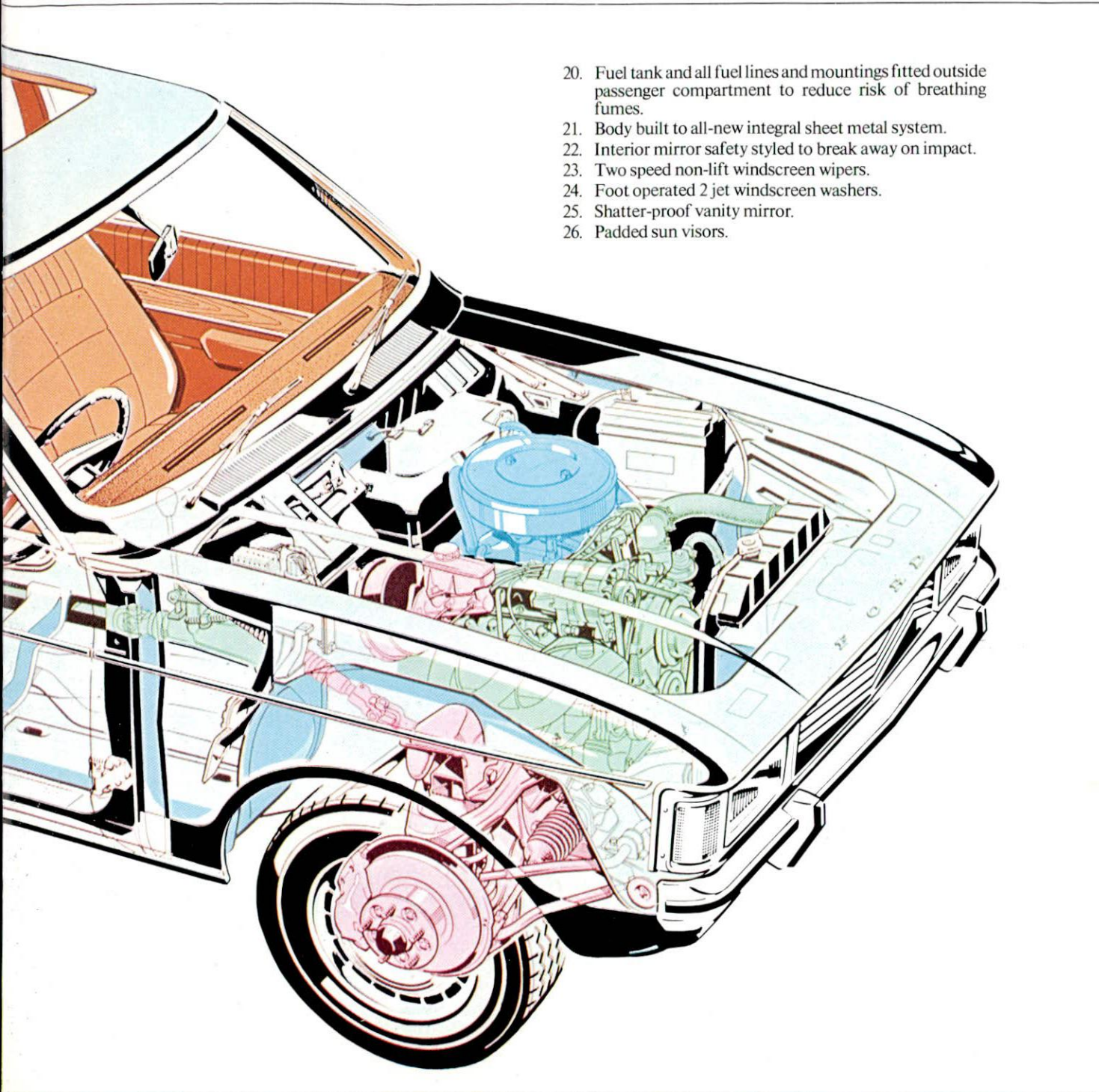
On the outside the reversing lamps and the dazzle-reduced headlamps let others know of your presence in all situations.

In the event of a collision, the specially designed collapsible front and rear ends absorb most of the impact, protecting the strengthened passenger cabin. At the same time, the steering column telescopes and special safety locks prevent the doors from bursting open.

For less dramatic situations, the Granada's self-adjusting dual-circuit braking system comes into operation. If one circuit fails the other ensures that the brakes - wide diameter discs at the front, or the drums at the rear - continue to function.



1. Independent suspension at front and rear for better roadholding and straight line stability.
2. Crash padding. Instrument binnacle, fascia top and safety styled front parcel shelf are all heavily padded.
3. Safety steering system with collapsible column. Safety styled wheel is padded to protect the driver.
4. Dual-line brakes.
5. Safety glass with toughened zone in front of driver's eyes.
6. Childproof locks on rear doors.
7. Instruments angled to avoid reflections.
8. Stalk fastening front seat belts (at extra cost) with push-button release.
9. Fused electrical system minimises fire risk.
10. Safety door locks meet anti-burst legal requirements.
11. Safety styled window winders.
12. Interior door handles recessed for safety.
13. Anti-tip seat device.
14. Reversing lights.
15. Dazzle-reduced headlamps.
16. Safety tyre ledge improves tyre retention.
17. Ventilated disc brakes at front on the 3 litre models.
18. Recessed switches throughout instrument panel.
19. Ignition switch located behind steering column to prevent knee impact.



20. Fuel tank and all fuel lines and mountings fitted outside passenger compartment to reduce risk of breathing fumes.
21. Body built to all-new integral sheet metal system.
22. Interior mirror safety styled to break away on impact.
23. Two speed non-lift windscreen wipers.
24. Foot operated 2 jet windscreen washers.
25. Shatter-proof vanity mirror.
26. Padded sun visors.

Ford Sure Service.

Ford Sure is a country-wide chain of Ford Dealers, every one of whom is linked by a common philosophy:-

Servicing a car is as important as selling it.

For you, Ford Sure means a free service for your Granada at 1500 miles. After that you are entitled to free diagnostic checks at the dealer from whom the car was purchased, plus a written report on its condition, at 15,000 and 27,000 miles, provided your normal servicing has been carried out by any Ford dealer.

Above all, you'll have the Ford Sure Service Certificate from the dealer, which states in simple straightforward, readable English, that a particular job was done properly. If it goes wrong after that due to their faulty workmanship, it'll be re-done without argument and free of charge.

That's Ford Sure.



What servicing should be.



BY APPOINTMENT
TO HER MAJESTY THE QUEEN
MOTOR VEHICLE MANUFACTURERS
FORD MOTOR COMPANY LTD
WINDYBANK ROAD



BY APPOINTMENT
TO HER MAJESTY THE QUEEN
MOTOR VEHICLE MANUFACTURERS
FORD MOTOR COMPANY LTD
WINDYBANK ROAD

Ford prices are delivered prices. The recommended Ford prices include delivery to Ford Dealerships throughout the UK (except Northern Ireland). These prices are therefore, not directly comparable with those issued by motor manufacturers who also levy an additional delivery charge.

The right is reserved to change the specification, colour range and prices of the models and items illustrated and described in this publication. You should therefore check current details with your Ford Dealer.

In accordance with statutory regulations,

Printed in England by W. S. Cowell Ltd, Ipswich

OVERRIDERS ARE ACCESSORIES AVAILABLE AT EXTRA COST.

front seat belts are fitted. These are supplied at extra cost.

Published by Car Merchandising Department, Ford Motor Company Ltd., Brentwood, Essex, England.



FA 700/483011/130M/722/DOM